

Traders (cont'd)

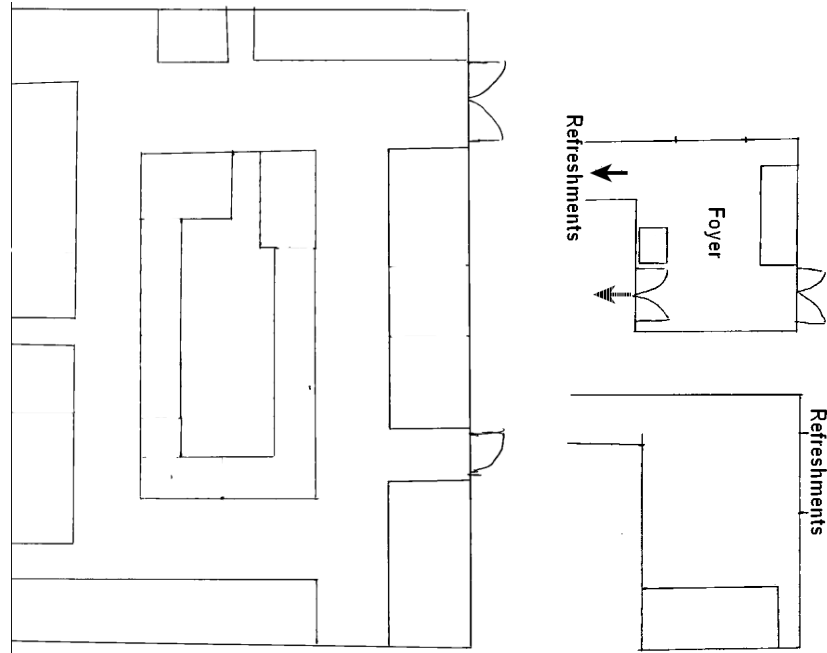
Railroad Trading (<http://www.railroadtrading.co.uk>) Railroad Trading will be bringing an assortment of Books and DVDs etc. including some that relate to narrow gauge(US and UK) plus a selection of British Railway titles- mostly Southern but more appropriate to the area.

Roger Jones

Roger will be selling a selection of secondhand models, videos, DVD's and railway books from his usual wide range.

Trains Boats and Planes (<http://www.trainsandboatsandplanes.co.uk/>) Will be displaying an outdoor layout weather permitting

Stand

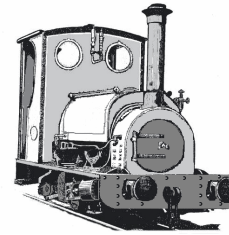


Page 4

Welcome to:- SWING St Wilfrid's Industrial and Narrow Gauge

Model Railway Exhibition

May 2010



PROGRAMME

This Programme is formatted to be printed out either double sided as a single sheet, or single sided as two, in either case to be folded and used in A5 format.

Please note that while every effort has been made to ensure the Programme is up to date and accurate, the organisers cannot be held responsible for late changes necessitated by non-attendance of layouts, traders etc or other external factors or for accidental error.

Stand numbers can be referenced on the diagram on the final page.

LAYOUTS

BODGIT & MUCH POTTERING - O16.5 (7mm = 1ft, gauge = 16.5mm)

Exhibited by Brian Cameron

A nicely done narrow gauge layout set in England, with convincing scenery, scratchbuilt structures. Brian will also be bringing some examples of his kits - see Arbeia Models in the trade section.

CHELFHAM - 009 (4mm = 1ft, 9mm gauge)

Exhibited by Tony Peart

Chelfham is based on the long-lost Lynton & Barnstaple Railway. A dominant feature of this lovely model, which figured in Railway modeller a few years ago, is the Chelfham Viaduct.

DUNBRACKEN - 009 (4mm = 1ft, 9mm gauge)

Exhibited by Tom Daube

Dunbracken is a 009 layout which is based on an ironing board and uses foamboard for the majority of its construction. It represents a quayside branchline terminus which is part of a network of fictitious lines running in the Scottish Highlands. The layout uses DCC control and was used as a testbed for scenic techniques that had not been attempted before. Stock used on the layout varies from modified kits to completely scratchbuilt. The layout was awarded the 2009 Reinier Hendriksen trophy.

Page 1

Stand

LAYOUTS (cont'd)

EAST HANTS LIGHT RAILWAY - 009 (4mm = 1ft, 9mm gauge)

Exhibited by Matt Wildsmith

A 009 layout modelling a 2'3" gauge Colonel Stephens Line linking the two market towns of Petersfield and Alton in East Hampshire. It represents the period after grouping, when the line became part of the Southern Railway, and immediately before the war. In fact the year is 1937.

GNEISS FARM - Gn15 (G scale on 16.5mm gauge)

Exhibited by Gerry Bullock

This delightful small layout set in Somerset depicts remote rural farm with access available only via narrow Farm lanes that are only passable by Farm Tractors. The Landowner in the tradition of Heywood has a love of railways and has constructed a Narrow Gauge Rail link to the local Branch line that, by fortune, passes over the land of adjoining Farms that benefit from the link to the nearby Market Town. He also has his own Steam Loco, which is a Replica of Heywood's Effie and is used to transport his mother to the local market.

PELPORRO - G scale (1:20.3 on 45mm gauge)

Exhibited by Brian Taylor

One of the most superb examples you will ever see of a small G scale layout. Despite the minimal space it remains wholly credible due, in no small measure to the fact that it can only be described as a work of art.

SELSEY TOWN STATION – 1925 - O scale and gauge (7mm = 1ft, 32mm gauge)

Exhibited by Keith Smith

Neither industrial, nor narrow gauge, we make no apologies for including this layout. In character it is narrow gauge in all respects except the gauge! A representation of possibly the most archetypal Colonel Stevens line this beautiful layout captures a part of Sussex over 80 years ago.

SOUTH BRIERLEY SEWAGE WORKS

Exhibited by Simon Hargraves

This superb layout was featured in Volume 6 of Industrial and Narrow Gauge Modelling Review - a testament in itself to its quality.

STEYNING SLIM LINE - O16.5 (7mm = 1ft, gauge = 16.5mm)

Exhibited by David Broome

A modular layout for the demonstration and display of O-16.5 narrow gauge stock. The layout aims to include enough scenery, buildings and particularly figures to demonstrate size and scale, but concentrates on the track and stock available and is of modular construction. This layout includes an automated train shuttle and other functions with any stock, to maintain the action without disaster whilst allowing operators to interact with viewers, but can be fully manually operated at any time.

Stand

LAYOUTS (cont'd)

TOUCHWOOD - O16.5 (7mm = 1ft, gauge = 16.5mm)

Exhibited by Nick Pidgley

This recently completed layout is freelance and set somewhere in the south of England somewhere around the 1950s. The line serves the small town of Touchwood, typically for many such railways, about half a mile away from the station..

The layout is DC operated and the majority of the locos and stock are kit built.

Trackwork is Peco with points operated by SEEP point motors and all the buildings on the layout are resin kits from Arbeia models.

WHITEOAK LIGHT RAILWAY - O16.5 (7mm = 1ft, gauge = 16.5mm)

Exhibited by Martin Coombs

The Whiteoak Light Railway is an entirely freelance industrial type railway and a figment of my imagination. Stock is either, kit built, scratch built or modified RTR, the golden rule is, if I like it, then it will run on the WLR. All the buildings are scratch built from styrene, MDF and plywood.

Baseboards are plywood, using both sheet and sandwich construction. Control is by DCC using the Gagemaster Prodigy system, with sound gradually being introduced.

ASSOCIATIONS etc

Association of 16mm Narrow Gauge Modellers

The West Sussex Area Group of the Association will have a small display at which Simon King will be happy to discuss the Association and what it does.

7mm Narrow Gauge Association (<http://www.7mmnga.org.uk/>)

The Surrey Group of the Association and will also be representing the Association.

Amberley Museum & Heritage centre (<http://www.amberleymuseum.co.uk/>)

This well known museum site with its operating narrow gauge railway will have a display. They will, of course, be only too happy for new volunteers to help their work. Why not make a weekend of it? On the following day they are holding their Spring Industrial Trains Day - an opportunity to see a variety of working narrow gauge trains.

TRADERS

Arbeia Models & scenics (<http://www.arbeiamodels.co.uk/>)

Will be bringing and selling their lovely range of resin kits and model trees, etc. Brian will also be displaying his O16.5 layout, BODGIT & MUCH POTTERING. See the layouts page for more information.

Falcon Figures

Martin Hill, who produces a range of superb 4 and 7mm scale figures in lead-free pewter, and which can be provided unpainted or painted will attend with his full range. Martin will also be demonstrating how he paints his figures.

Model Railway Developments (www.emardee.org.uk)

"Applying cutting edge technology and sound engineering principles to the developments and advancements of our hobby" ~Selling DHR rolling stock kits in 7mm etc.

Stand

The John Hayward Shield

Earlier this year the South Downs Group of the 7mm Narrow Gauge Association was deeply saddened to lose John Hayward – our founding member, and the inspiration behind SWING, and in his wider life to many other people. In his tribute we have created the John Hayward Shield award for the best layout in the show as voted for by YOU, the visitors.

BODGIT & MUCH

CHELFHAM

DUNBRACKEN

EAST HANTS LIGHT RAILWAY

GNEISS FARM

PELPORRO

SELSEY TOWN STATION

SOUTH BRIERLEY SEWAGE WORKS

STEYNING SLIM LINE

TOUCHWOOD

WHITEOAK LIGHT RAILWAY

Please mark an X opposite the layout you believe most deserves this award and place your voting slip in the box provided by 3.00 pm. The winner will be announced and the presentation made at 4:00 pm

The John Hayward Shield

Earlier this year the South Downs Group of the 7mm Narrow Gauge Association was deeply saddened to lose John Hayward – our founding member, and the inspiration behind SWING, and in his wider life to many other people. In his tribute we have created the John Hayward Shield award for the best layout in the show as voted for by YOU, the visitors. Please mark an X opposite the layout you believe most deserves this award.

BODGIT & MUCH POTTERING

CHELFHAM

DUNBRACKEN

EAST HANTS LIGHT RAILWAY

GNEISS FARM

PELPORRO

SELSEY TOWN STATION

SOUTH BRIERLEY SEWAGE WORKS

STEYNING SLIM LINE

TOUCHWOOD

WHITEOAK LIGHT RAILWAY

Please mark an X opposite the layout you believe most deserves this award and place your voting slip in the box provided by 3.00 pm. The winner will be announced and the presentation made at 4:00 pm.

